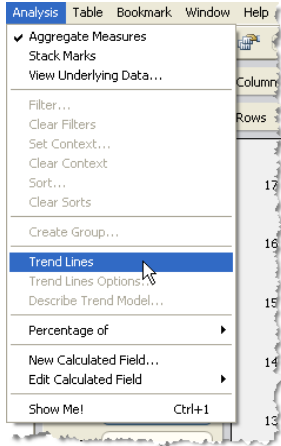


Using Trend Lines

Trend Lines, also known as best fit lines, are computed lines that model the data in your view. Follow the instructions below to learn how to add trend lines to your view.

1 Turn on Trend Lines.

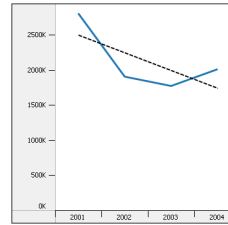
Select **Analysis > Trend Lines**.



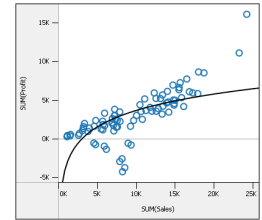
This step will add a linear trend line for each pane and for each color in the view. You can change the model type and exclude fields as factors in the model in the Trend Line Options dialog box (continue to step two).

2 Select a Model Type.

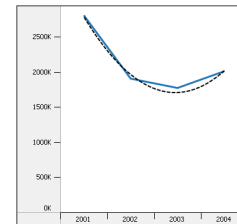
Optionally, edit the trend line using the Trend Line Options dialog box. Selecting **Analysis > Edit Trend Lines**. Then select one of the following model types.



Linear



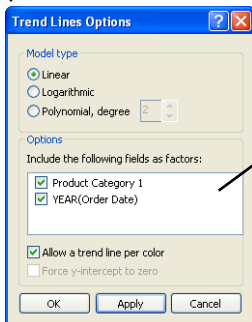
Logarithmic



Polynomial

3 Exclude fields from the model.

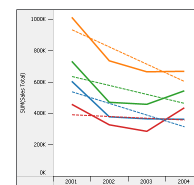
Deselect fields that you do not want to include as factors in the trend line model. For example, on a view of the quarterly sales for three different products over four years, you may want to see the overall sales trend rather than a different line for each product. In this case, you would exclude the products field as a factor.



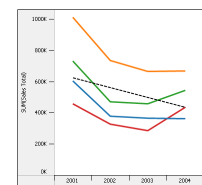
Deselect fields that you don't want included in the trend line model.

4 Specify additional options.

Select whether to allow a trend line per color. When you have color encodings in your view, you can use this option to add a single trend line that models all of the data ignoring the encoding.



Including Color



Excluding Color

You can also select whether to force the y-intercept to zero. This means on a view with a continuous field on both the rows and columns shelf, the intercept will be forced to zero.

Note: After you add Trend Lines, you can use the Describe feature to display statistics on the trend line. For example, you can see the formula as well as r-squared and p values. To view a description of a single trend line, right-click on the trend line in the view and select **Describe Trend Line**. To view a description of the entire trend line model, select **Analysis > Describe Trend Model**.