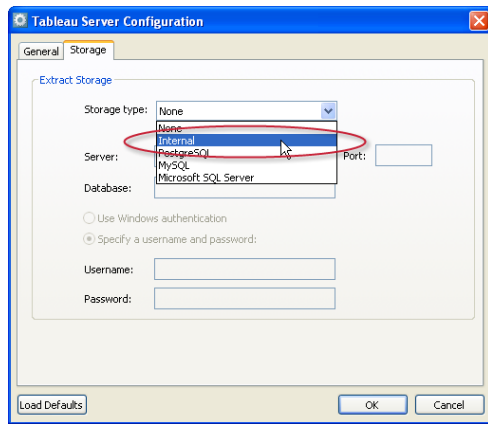


# Refresh Extracts on a Schedule

When you publish workbooks that connect to a database extract you can set up the server to automatically refresh the data on a recurring schedule. That way you can both increase performance by extracting just the data you need and always show recent data.

## 1 Configure an Extract Storage Type

In order to enable the refresh extracts feature the server needs to be configured with a extract storage type. You can set it up during your initial install or by selecting **Tableau Server 5.0 > Tableau Server Configuration** on the Start menu.



Choose **Internal** to use the built in database.

**IMPORTANT:** You cannot change the extract storage type after you've chosen one.

## 2 Set up a Schedule on the Server

Log into the server as an administrator and click the **Maintenance** link on the left side of the page. Then click the **Schedules** link on the Maintenance page. Click the **Create New Schedule** link at the bottom of the table to create a new schedule.

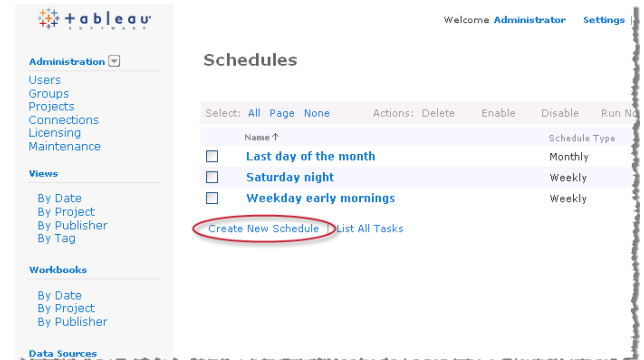
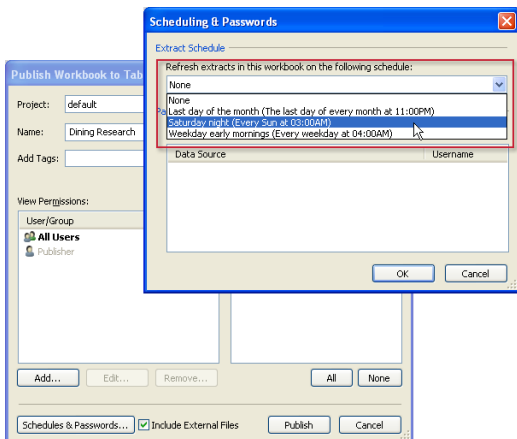


Tableau Server automatically creates three schedules.

## 3 Publish a Workbook with an Extract

On the Publish Workbook dialog box in Tableau Desktop click the Schedules and Passwords buttons. Choose a schedule from the drop-down list.



Make sure to embed any passwords too. Embedded Credentials can be enabled on the server Maintenance page.

## 4 Monitor the Schedules

As an administrator you can monitor scheduled tasks and whether they've completed using the Task History administrative view available on the Maintenance page.

