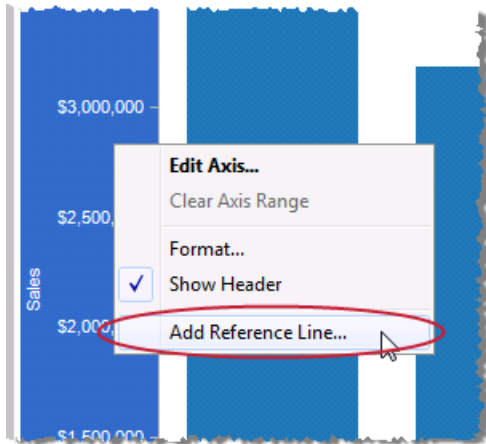


# Reference Lines

Draw a line to indicate a specific value in the view using Reference Lines. Add a constant or computed value using any measure in the view. For example, in a view showing regional sales you can add a reference line showing the average profit for those regions.

## 1 Right-click and Add Reference Line

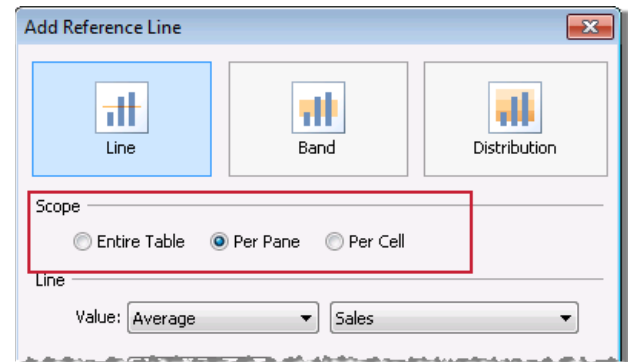
Right-click a continuous axis and select **Add Reference Line**.



Edit reference lines later by right-clicking the axis and selecting Edit Reference Line.

## 2 Select a Scope for the Line

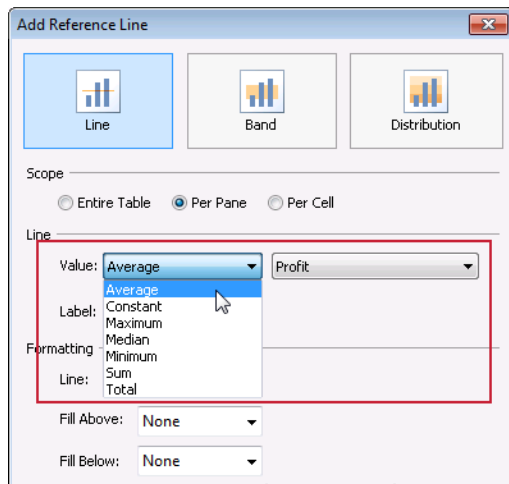
Select whether to show a line across the entire **Table**, just within the **Pane**, or for each individual **Cell**.



## 3 Specify Where to Draw the Line

Select the **Value** you want to reference. You can select a computation such as Average, Minimum, and Maximum or select Constant to type a specific value. Computed values can be based on any measure used in the view.

Drag measures to the Level of Detail shelf to make them available as reference lines.



## 4 Format the Line

Specify formatting options such as line style and color. Additionally, you can choose to shade the background by adding Fill Above and Fill Below.

