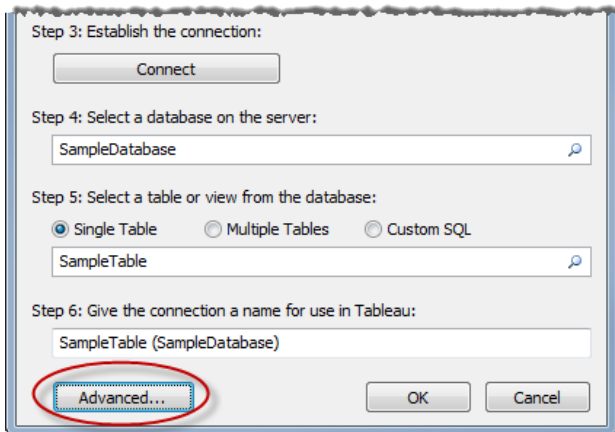


Teradata Query Banding

Define query band statements that are run during connection. Query banding allows you to pass parameters into the Teradata environment. Use these to set up a workbook to filter the data based on security rules that exist in the database. For example, you can pass in the Tableau Server username for the current user so when the view is loaded it only shows the data specific to that user. Query bands can also be used to improve performance. When connecting to Teradata, you can define a map between the name of the attributes passed into the query band and the corresponding values from Tableau.

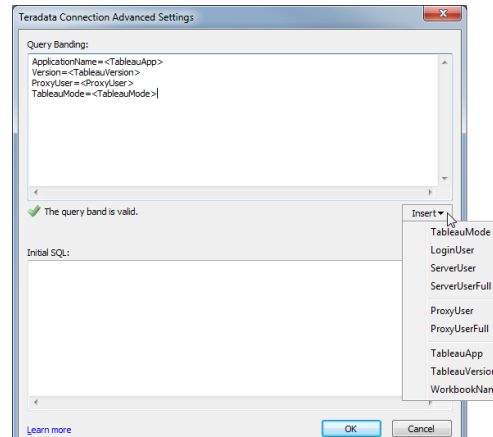
1 Open the Advanced Dialog Box

In the Teradata Connection dialog box, click the Advanced button in the lower left corner.



2 Specify the Name/Value Pairs

In the upper portion of the Advanced dialog box, type the name of the attribute and insert the corresponding Tableau value. The query band statement shown below passes the username for the current server user.



Use the Insert menu to add Tableau values. Tableau checks the statement for errors as you type.

Available Tableau Values

The following table shows the values that are available to pass into the query band.

Value	Description	Example
<TableauMode>	The mode Tableau is operating in when generating queries. This value will either be "Connect" or "Analytical".	Connect or Analytical
<LoginUser>	The username of the person logged into the database.	jsmith
<ServerUser>	The logged in Server user. Does not include domain name.	jsmith
<ServerUserFull>	The logged in Server user including the domain name (if the server is using Active Directory)	domain.lan\jsmith
<ProxyUser>	Used when setting up impersonation on the server. Provides the username of the current server user.	jsmith
<ProxyUserFull>	Used when setting up impersonation on the server. Provides the username and domain name of the current server user.	domain.lan\jsmith
<TableauApp>	The name of the Tableau application.	Tableau Desktop Professional or Tableau Server
<TableauVersion>	The version of the Tableau application.	6100.11.0428.0300
<WorkbookName>	The name of the workbook.	Financial-Analysis