

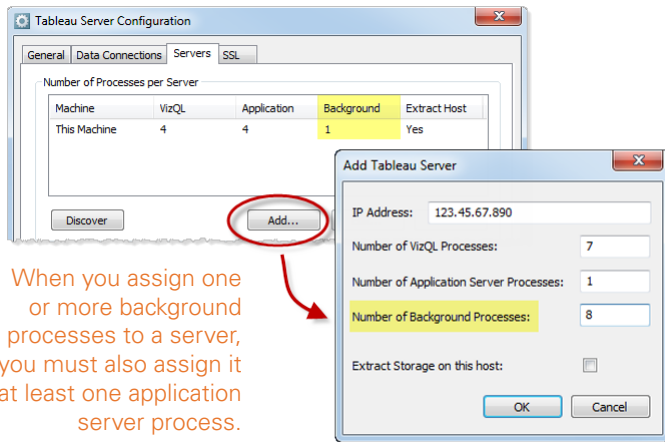
# Parallel & Distributed Job Processing

Tableau Server now supports running background processes in parallel and across multiple nodes. As the administrator, you can designate the number of background processes that should run on a primary or worker server, and you can control whether the server runs certain jobs in parallel or serially. You can also find out which jobs a specific background process has handled.

## 1 Assign Background Processes

The number of processes you can assign is limited by the number of processors.

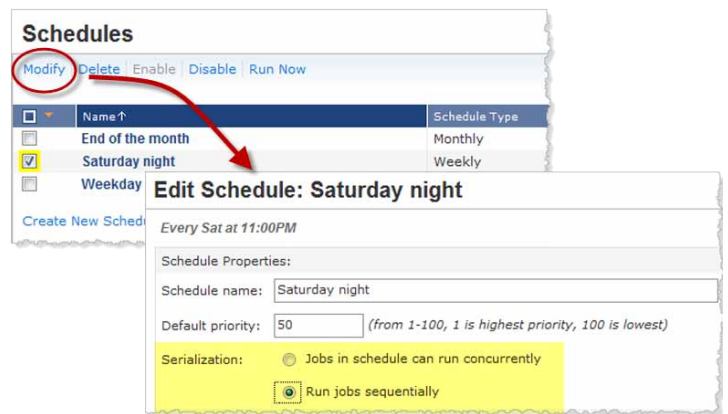
To assign one or more background processes to a server, click Add in the Tableau Server Configuration dialog box:



When you assign one or more background processes to a server, you must also assign it at least one application server process.

## 2 Control Parallel or Serial Processing

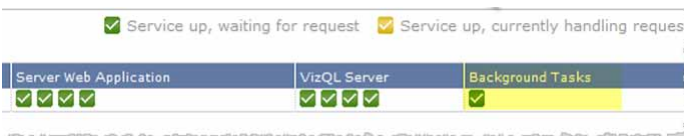
By default, all jobs in a schedule are run in parallel. There are some jobs, however, that you may want to run serially—for example, full extract refreshes, which can be database intensive. On the Maintenance page, click **Schedules**. Select a schedule and click **Modify**:



## 3 View Background Status

For at-a-glance status on assigned background processes, click the Maintenance link under Administration.

The Status table displays background task information:



## 4 Review Background Task Details

To drill into details on a specific background item, click **Background Tasks** on the Maintenance page, then use **Filter to Background ID** to view details.

