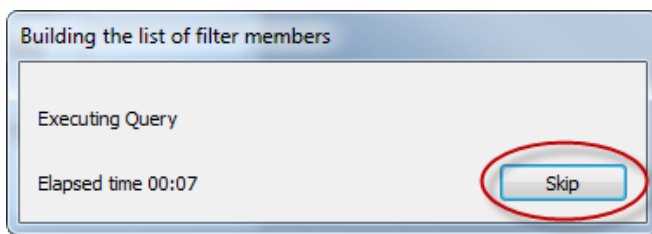


Filtering Large Dimensions

When you are working with large dimensions, changing filter settings can sometimes take a long time. Below are some tips for filtering large data sets using some of the new features in version 6.0.

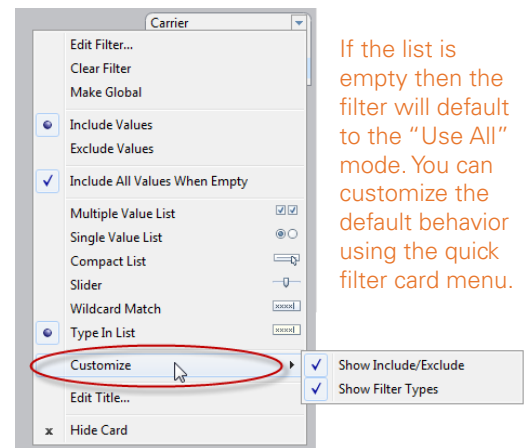
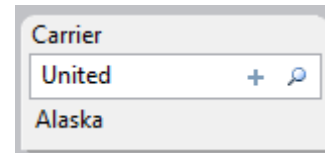
Skip Long Queries

In general, Tableau will try to avoid long queries just to retrieve the domain for the filter. However, when a query is running, you now have the option to skip the initial query. When you skip the query, the Filter dialog box, opens using the Type In List mode, which lets you type or paste in a list of values to filter on.



Type in List Quick Filter

There is a new quick filter mode called Type In List. This type of quick filter is very similar to the Type In List mode in the filter dialog box.

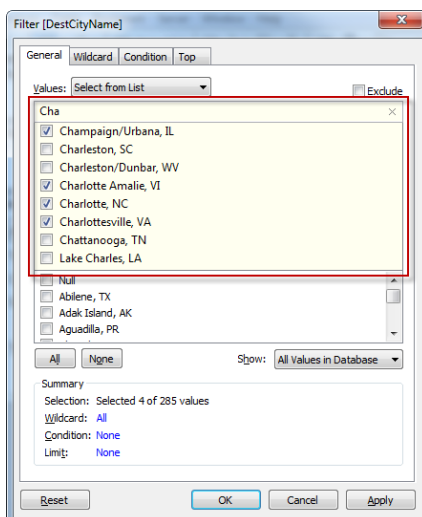


If the list is empty then the filter will default to the "Use All" mode. You can customize the default behavior using the quick filter card menu.

Search for Values

Use the new search box to find and select values that you want to filter on. If the entire domain query has already been run, searching will show results in real-time that you can select to include in the filter. If the domain is unknown, click the Search button on the far right side of the search box. This search does require another query that could take some time.

When the domain is known, the search results show in real time.



When the domain is not known click the Search button to generate the query. Or click the Plus button to add a specific value to the filter list.

