

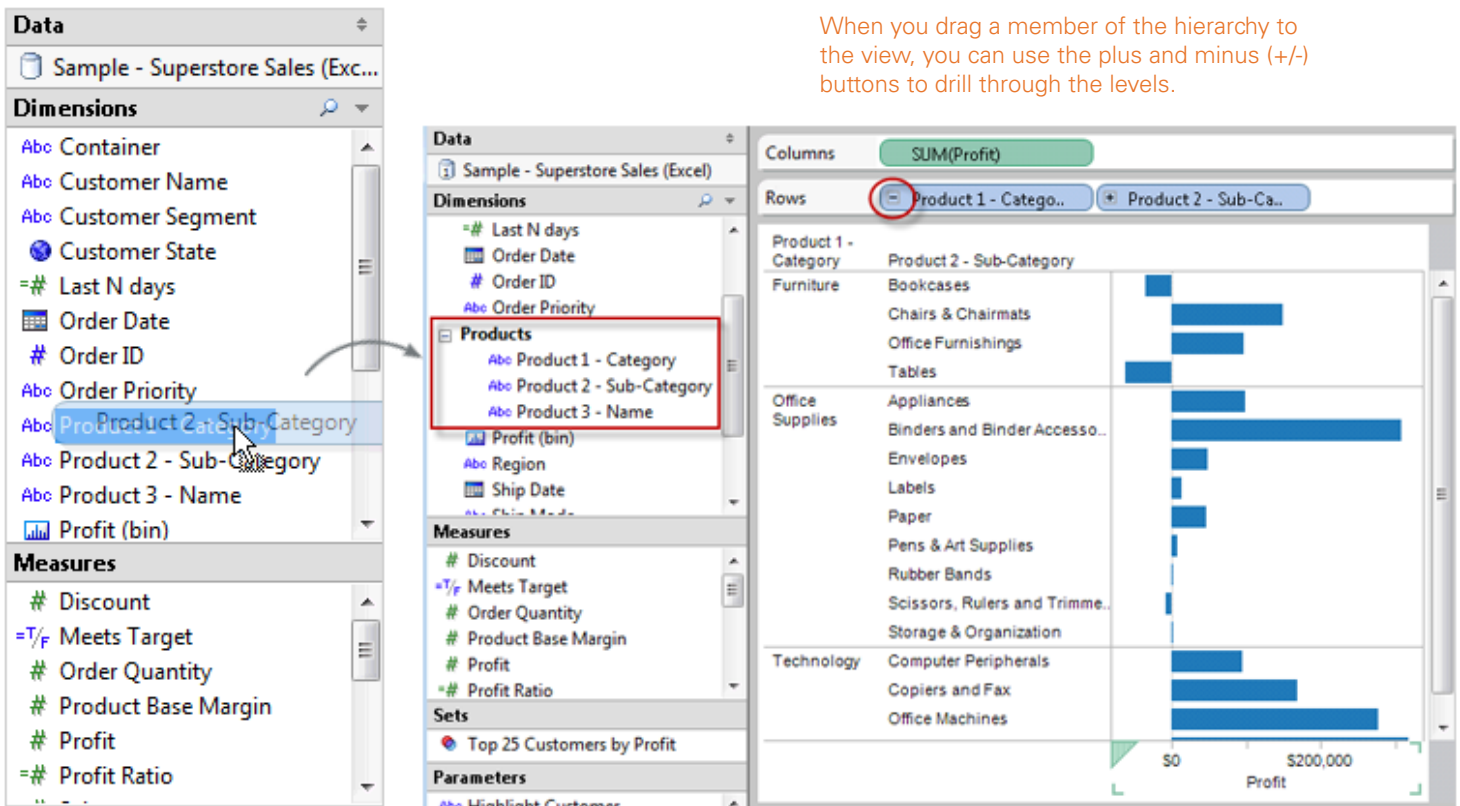
Hierarchies

By default Tableau automatically separates date fields into hierarchies so you can easily break down the view by year, quarter, month, etc. You can also create your own custom hierarchies. For example, you may have fields like Region, State, County, etc. You can create a hierarchy with these fields so that you can quickly drill through each level.

Drag and Drop Fields in the Data Window

Create hierarchies simply by dragging one field on top of another in the Data window. After that you can drag and drop the fields to reorder the levels of the hierarchy.

When you drag a member of the hierarchy to the view, you can use the plus and minus (+/-) buttons to drill through the levels.



Note: You can also create hierarchies by selecting multiple fields in the Data window, right-clicking and selecting Create Hierarchy.