

# Distributed Server

Increase the scalability of your Tableau Server environment by distributing the server components across several machines. After you install Tableau Server on your primary server, use the Worker Installer to install the software onto one or more “worker” machines. Then configure the primary machine to use those workers.

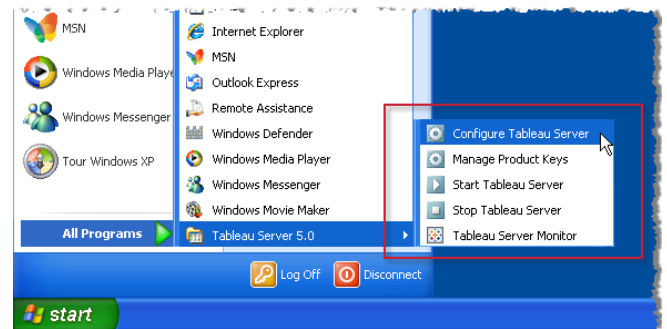
- ### 1 Install Tableau Server onto Workers

Download the Tableau Server Worker installer (available from the beta website) and install it on all of the machines except your primary server.



- ### 2 Open the Configuration Utility

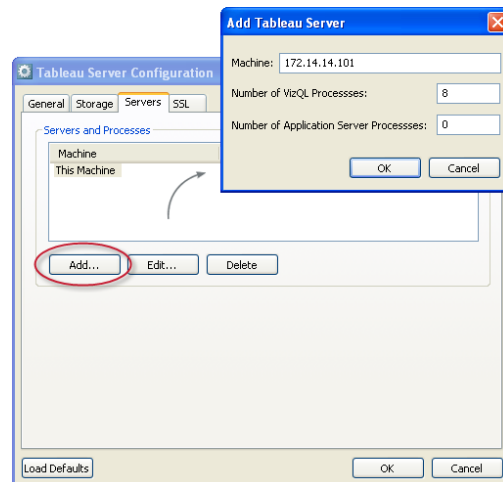
On your primary server, open the configuration utility by selecting **Tableau Server 5.0 > Configure Tableau Server**.



Make sure Tableau Server is installed on your primary machine before configuring the worker machines.

- ### 3 Add the Worker Machines

In the Configuration Utility select the **Servers** tab and click the **Add** button. In the subsequent dialog box, type the IP Address for the **Machine** and specify the number of VizQL and Application Server processes to allocate to the machine. Repeat this for each machine you want to distribute across.



Make sure you type the IP Address of the machine.

## Configure & Update the Primary Machine

After you setup the workers you can do all configuration and updates on the primary machine. Specifically, you should make changes using the command line tools and the configuration utility on the primary machine. Updates will be pushed to the workers automatically.