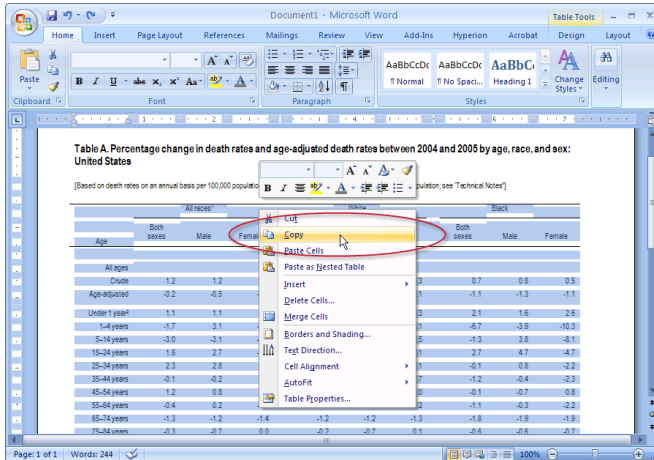


Clipboard Data Sources

Easily explore data from most desktop applications. Simply copy and paste the data into Tableau and a data source is automatically created for you so you can start asking questions right away.

1 Copy Data

Select data in a desktop application and copy it to the clipboard.



2 Paste into Tableau

Open Tableau Desktop and select **Edit > Paste Data**. A new data source is automatically created.

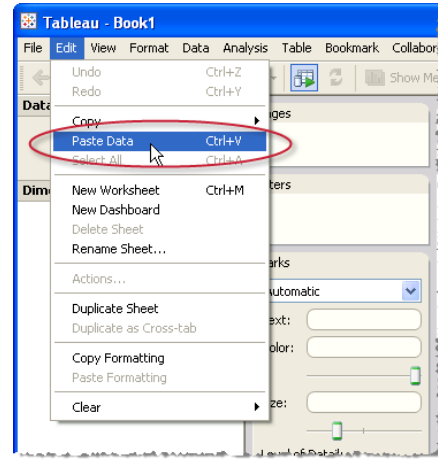
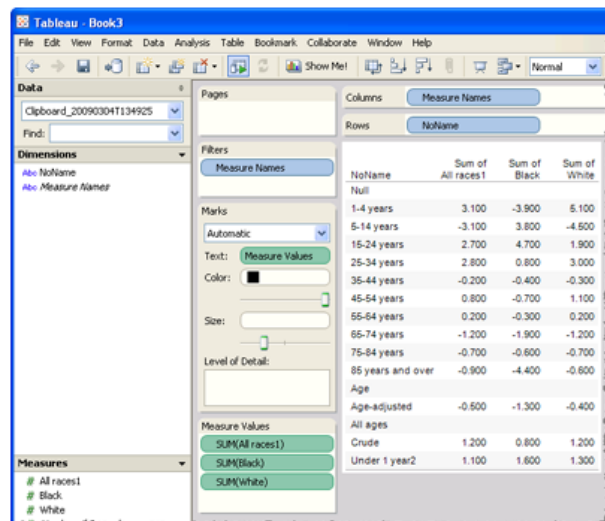


Tableau accepts comma separated or tab delimited data from the clipboard.

3 Save the Data Source

When you save the workbook the new data source is saved into your Tableau Repository.



When you save the workbook as a packaged workbook the data source is saved with the workbook instead of into your repository.

