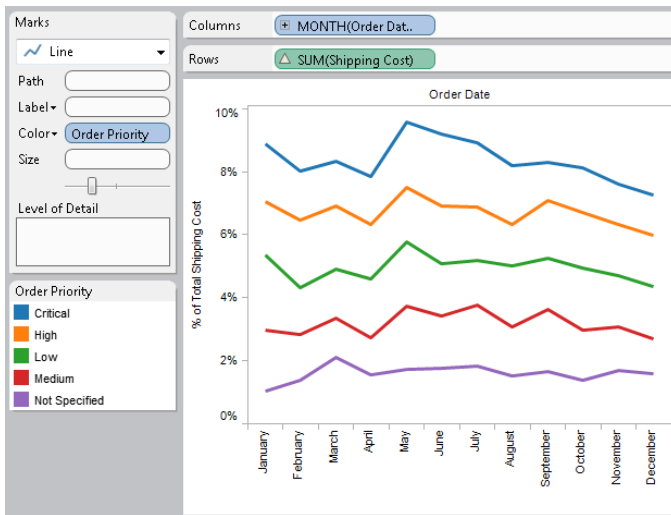


# Area Charts

An area chart is a line chart where the area between the line and the axis are shaded with a color. These charts are typically used to represent cumulated totals over time and are the conventional way to display stacked lines. Follow the steps below to create an area chart.

## 1 Build a Stacked Line Chart

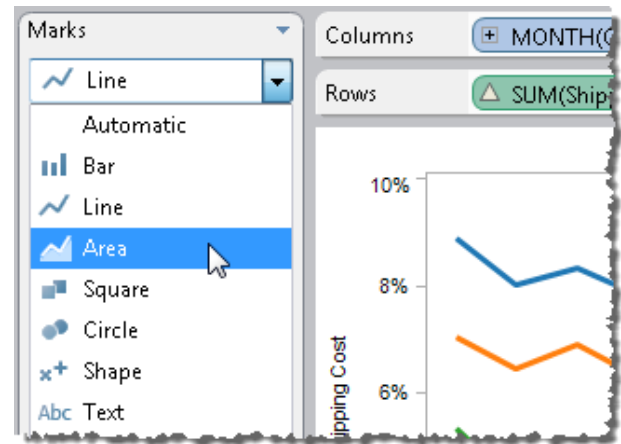
Drag a dimension to the Columns shelf and a Measure to the Rows shelf. Then Drag another dimension to the Color Shelf. Select **Analysis** > **Stack Marks** > **On** to stack the lines.



This example shows percent of total shipping costs by order priority.

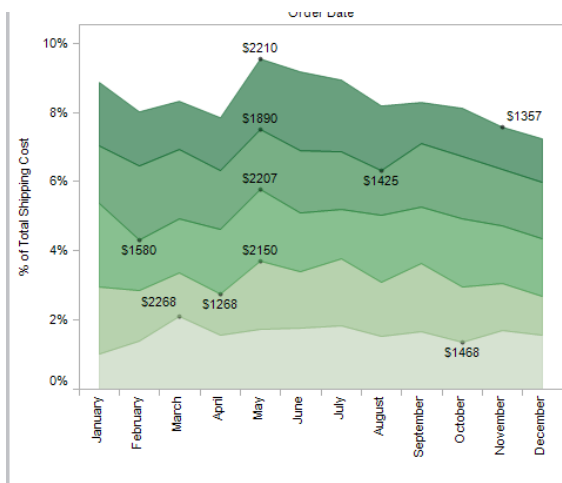
## 2 Select the Area Mark Type

The Automatic mark type will show this type of view as lines. On the Marks card, select Area to show the data as an area chart.



## 3 Add Formatting

You can add formatting to an area chart similar to any other type of view. For example, you can edit the color legend and turn on mark labels and borders.



## 4 Highlight the Areas

You can also use highlight actions with area charts. For example, selecting a color in the legend will highlight the entire area instead of the just the line.

